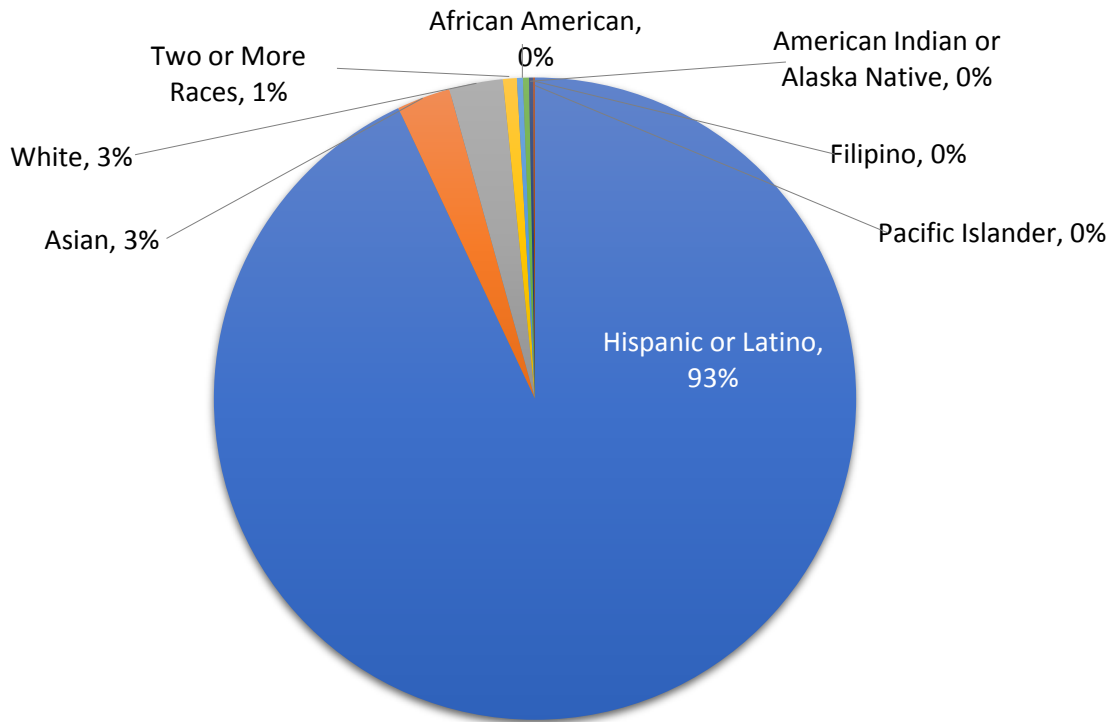


THE CALIFORNIA COLLABORATIVE ON DISTRICT REFORM
Santa Ana Unified School District (USD)
Student Enrollment & Performance

Santa Ana USD Enrollment by Ethnicity/Race, 2016–17



Source: California Department of Education, DataQuest [online database], district enrollment by race, 2016–17, dq.cde.ca.gov.

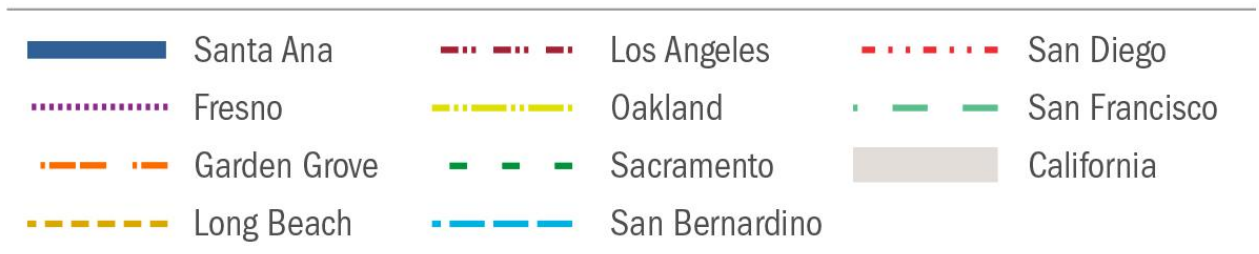
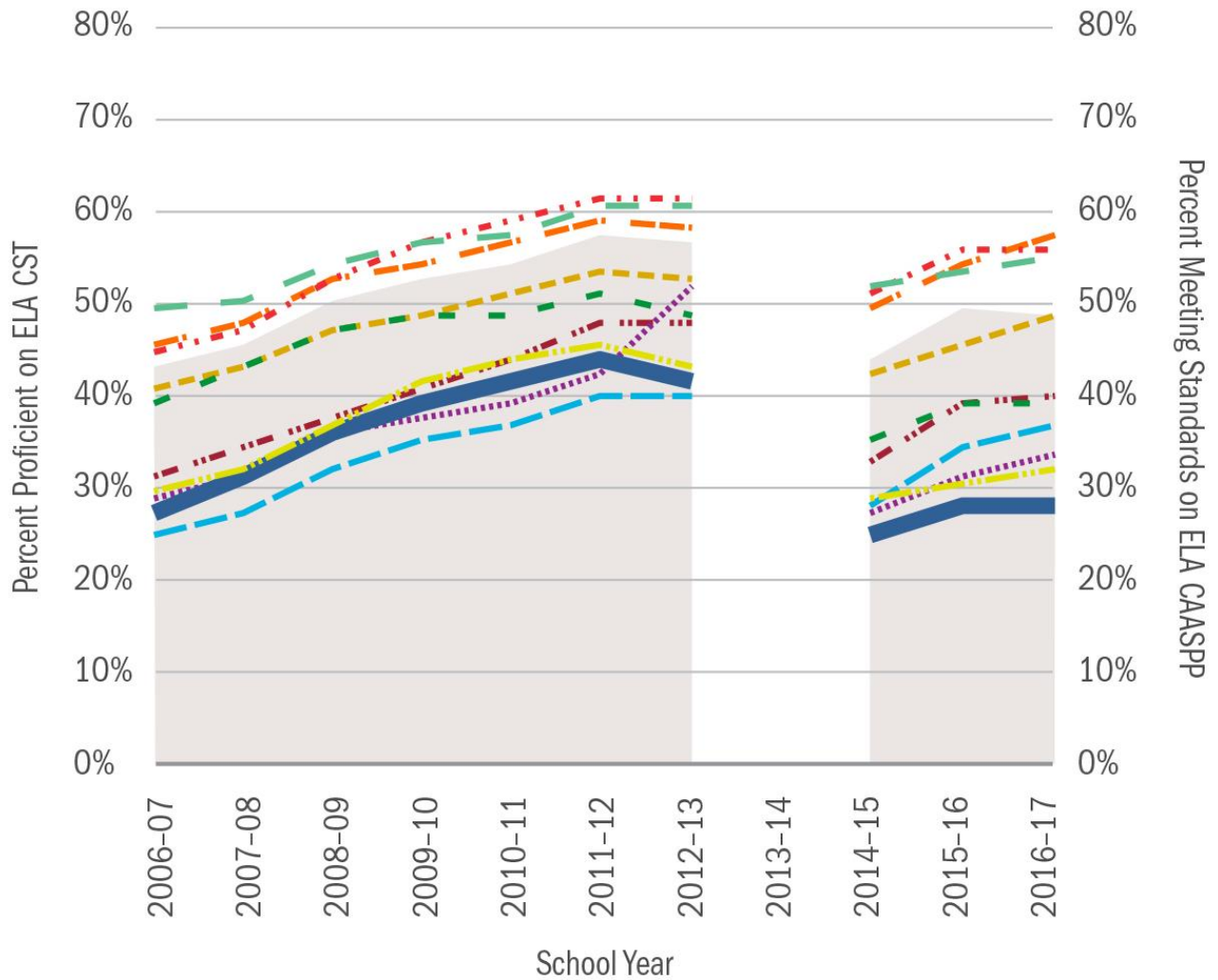
Santa Ana USD Demographic Profile, 2016–17

	Santa Ana USD	California
Total Enrollment	54,505	6,228,235
African American	0.3%	5.6%
American Indian or Alaska Native	0.2%	0.5%
Asian	2.7%	9.0%
Filipino	0.3%	2.5%
Hispanic or Latino	93.0%	54.2%
Pacific Islander	0.1%	0.5%
White	2.7%	23.6%
Two or More Races	0.7%	3.3%
Not Reported	0.0%	0.7%
English Learners	39.8%	21.4
Special Education	12.2%	12.1%
Socioeconomically Disadvantaged	86.5%	58.1%
Foster Youth	0.7%	1.0%
Homeless	14.1%	4.8%
Unduplicated Pupils	85.6%	61.8%

Source: California Department of Education, DataQuest [online database], 2016–17, dq.cde.ca.gov; KidsData.org, homeless youth by school district, 2016–17, kidsdata.org; Ed-Data, unduplicated pupils by school district, 2016–17, ed-data.org.

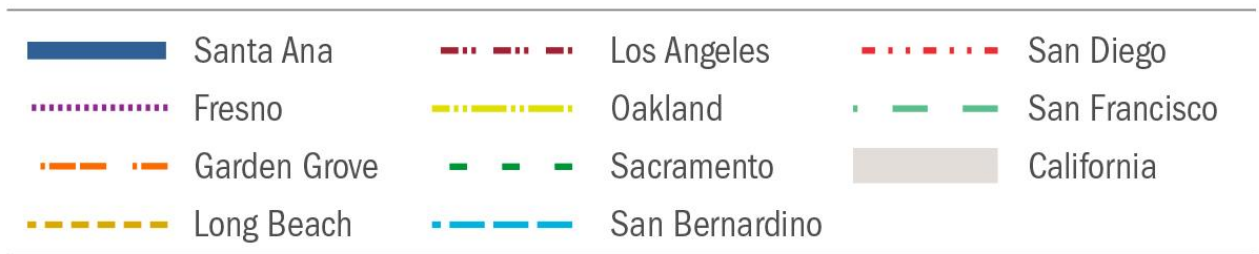
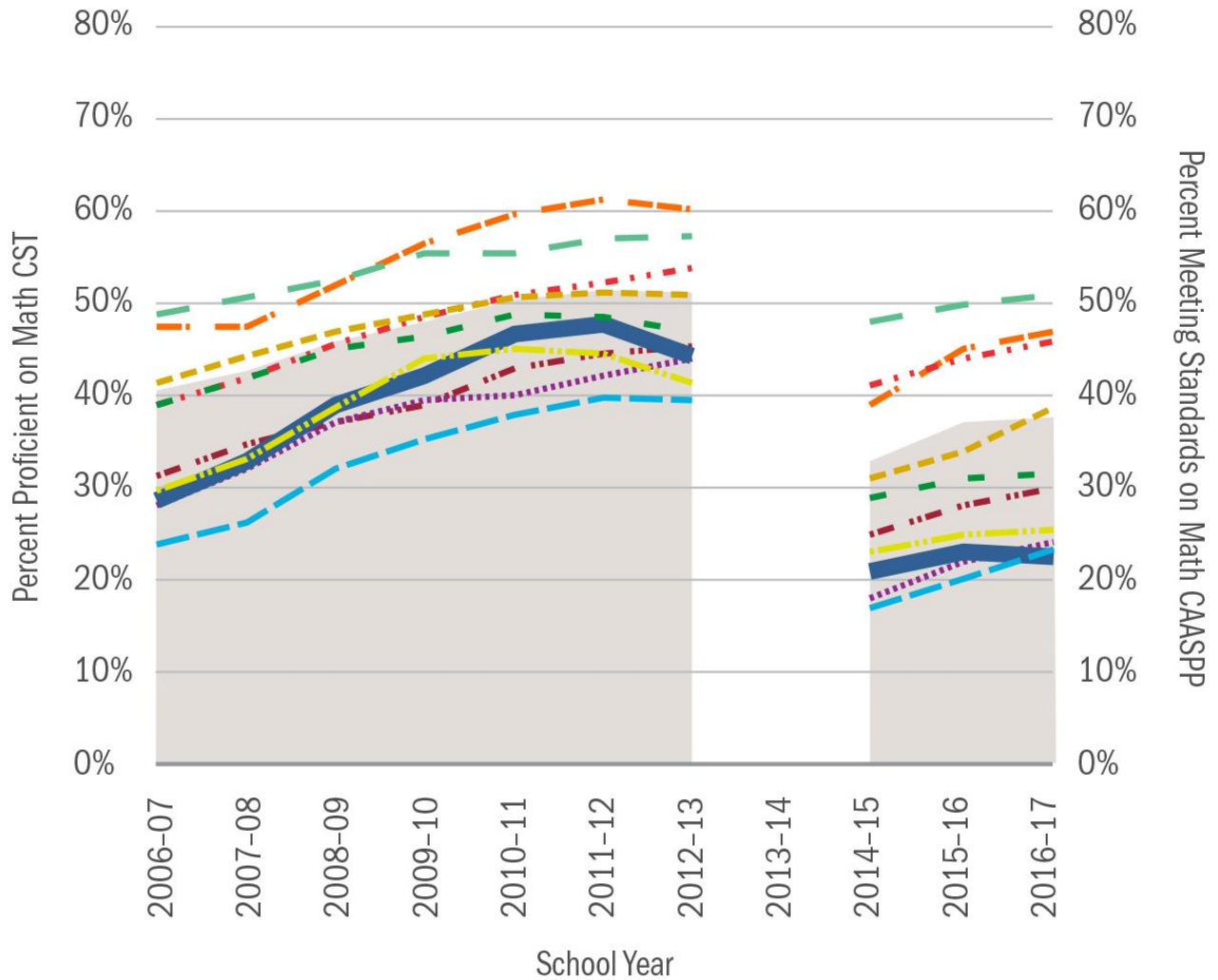
NOTES: Foster youth is data for 2015-16 school year.

THE CALIFORNIA COLLABORATIVE ON DISTRICT REFORM
California Proficiency Rates on ELA CST 2007–2013 and Meeting Standards Rates on ELA CAASPP, 2015–2017



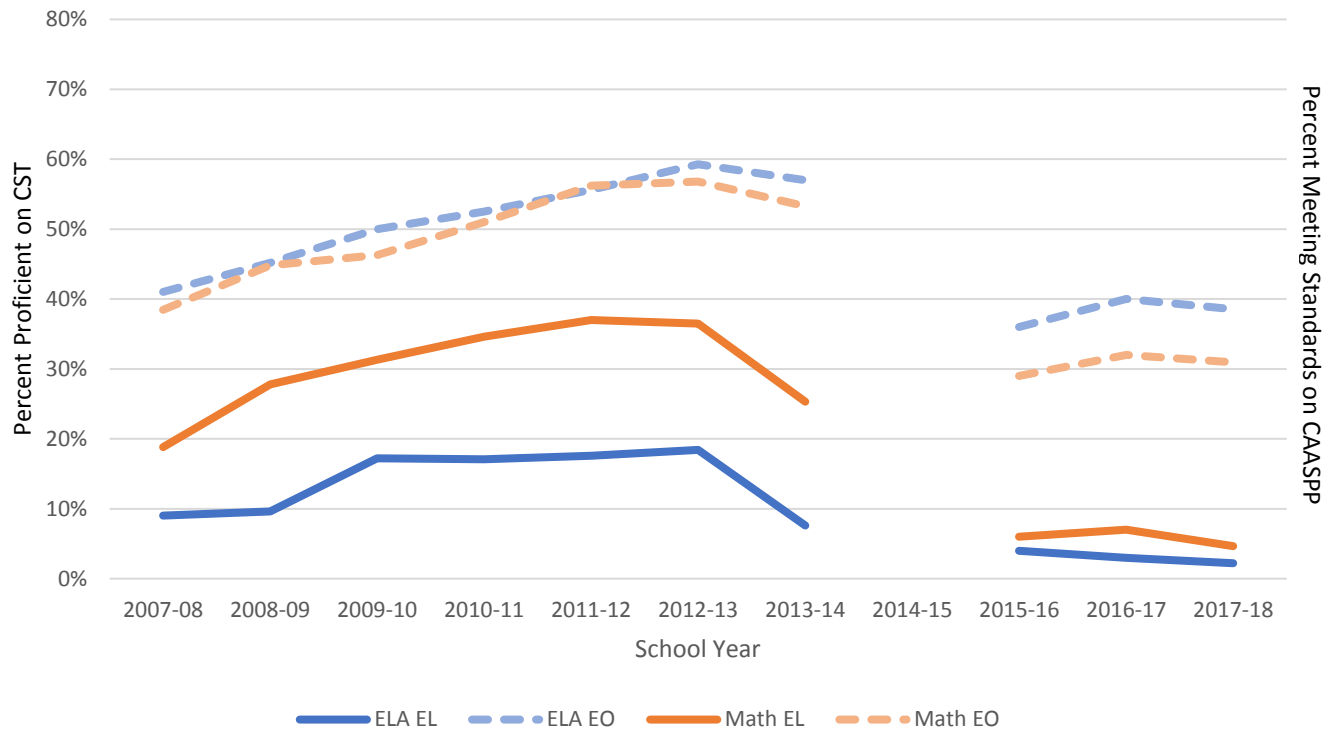
Source: Standardized Testing and Reporting (STAR) Results, 2007–13, star.cde.ca.gov; California Assessment of Student Performance and Progress (CAASPP) Results, 2015–17, caaspp.cde.ca.gov.

THE CALIFORNIA COLLABORATIVE ON DISTRICT REFORM
California Proficiency Rates on Math CST 2007–2013 and Meeting Standards Rates on Math CAASPP 2015–2017



Source: Standardized Testing and Reporting (STAR) Results, 2007–13, star.cde.ca.gov; California Assessment of Student Performance and Progress (CAASPP) Results, 2015–17, caaspp.cde.ca.gov.

THE CALIFORNIA COLLABORATIVE ON DISTRICT REFORM
Santa Ana USD English Learner (EL) and English Only (EO) ELA and Math Proficiency Rates
CST 2007–2013 and Meeting Standards Rates CAASPP 2015–2017



Source: Standardized Testing and Reporting (STAR) Results, 2007–13, star.cde.ca.gov; California Assessment of Student Performance and Progress (CAASPP) Results, 2015–17, caaspp.cde.ca.gov.

NOTES: CST data from 2007-2013 adjusted to only include test scores for Grades 3-8 and 11 only to make scores more comparable with CAASPP data.