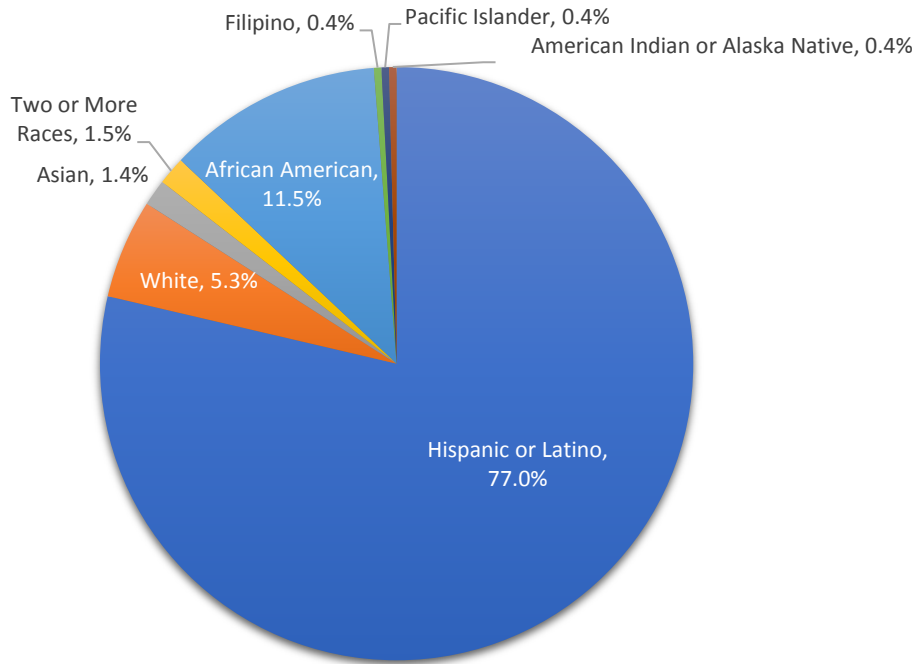


THE CALIFORNIA COLLABORATIVE ON DISTRICT REFORM
San Bernardino City Unified School District (USD)
Student Enrollment & Performance

San Bernardino City USD Enrollment by Ethnicity/Race, 2018–19



Source: California Department of Education, DataQuest [online database], district enrollment by race, 2018–19, dq.cde.ca.gov.

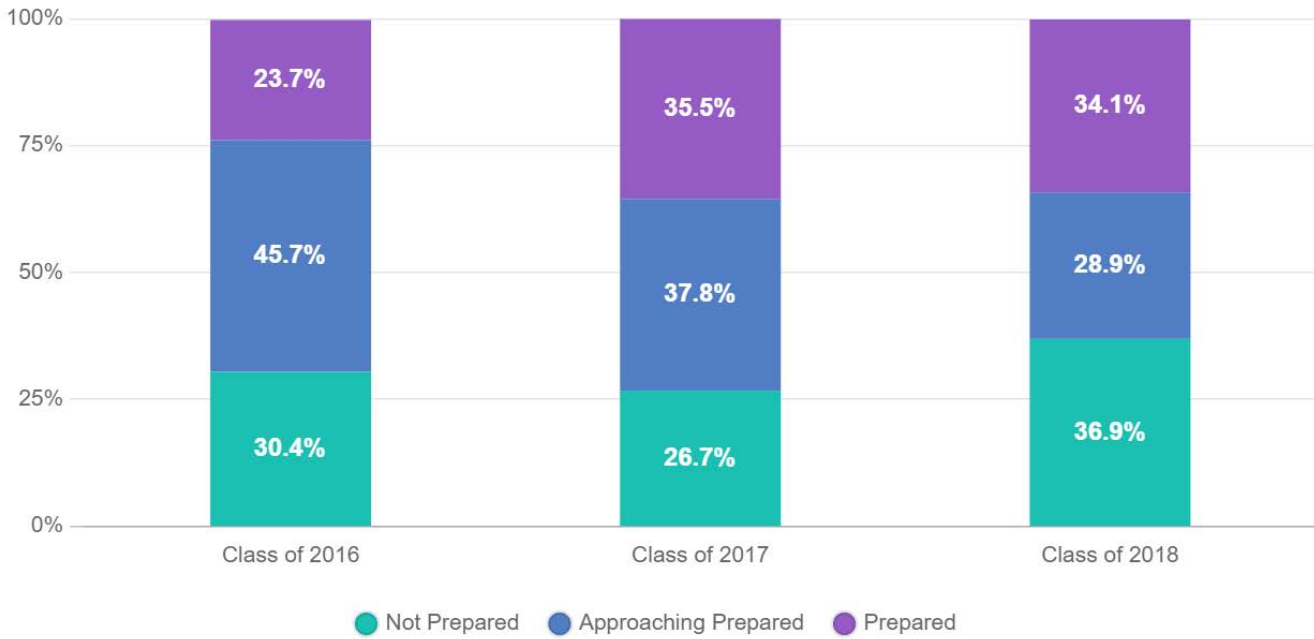
San Bernardino USD Demographic Profile, 2018–19

	San Bernardino City USD	California
Total Enrollment	52,773	6,186,278
African American	11.5%	5.4%
American Indian or Alaska Native	0.4%	0.5%
Asian	1.4%	9.3%
Filipino	0.4%	2.4%
Hispanic or Latino	77.0%	54.6%
Pacific Islander	0.4%	0.5%
White	5.3%	22.9%
Two or More Races	1.5%	3.6%
Not Reported	2.2%	0.9%
English Learners	52.3%	57.9%
Special Education	12.9%	12.6%
Socioeconomically Disadvantaged	88.3%	60.1%
Foster Youth	<0.1%	<0.1%
Homeless	13.8%	4.4%
Unduplicated Pupils	90.1%	59.2%

Source: California Department of Education, DataQuest [online database], district enrollment by race, English learner, special education, socioeconomically disadvantaged, and foster youth, 2018–19, dq.cde.ca.gov; KidsData.org, homeless public school students, 2016, kidsdata.org; Ed-Data, unduplicated pupils by school district, 2017–18, ed-data.org.

NOTE: Socioeconomically Disadvantaged and Foster Youth data come from 2017–18 school year. Homelessness data come from 2016.

THE CALIFORNIA COLLABORATIVE ON DISTRICT REFORM
Percent of San Bernardino USD Students that Qualify as Not Prepared, Approaching Prepared, and Prepared on College/Career Readiness Indicator



Source: California School Dashboard [online database], College/Career, 2016–18, caschooldashboard.org

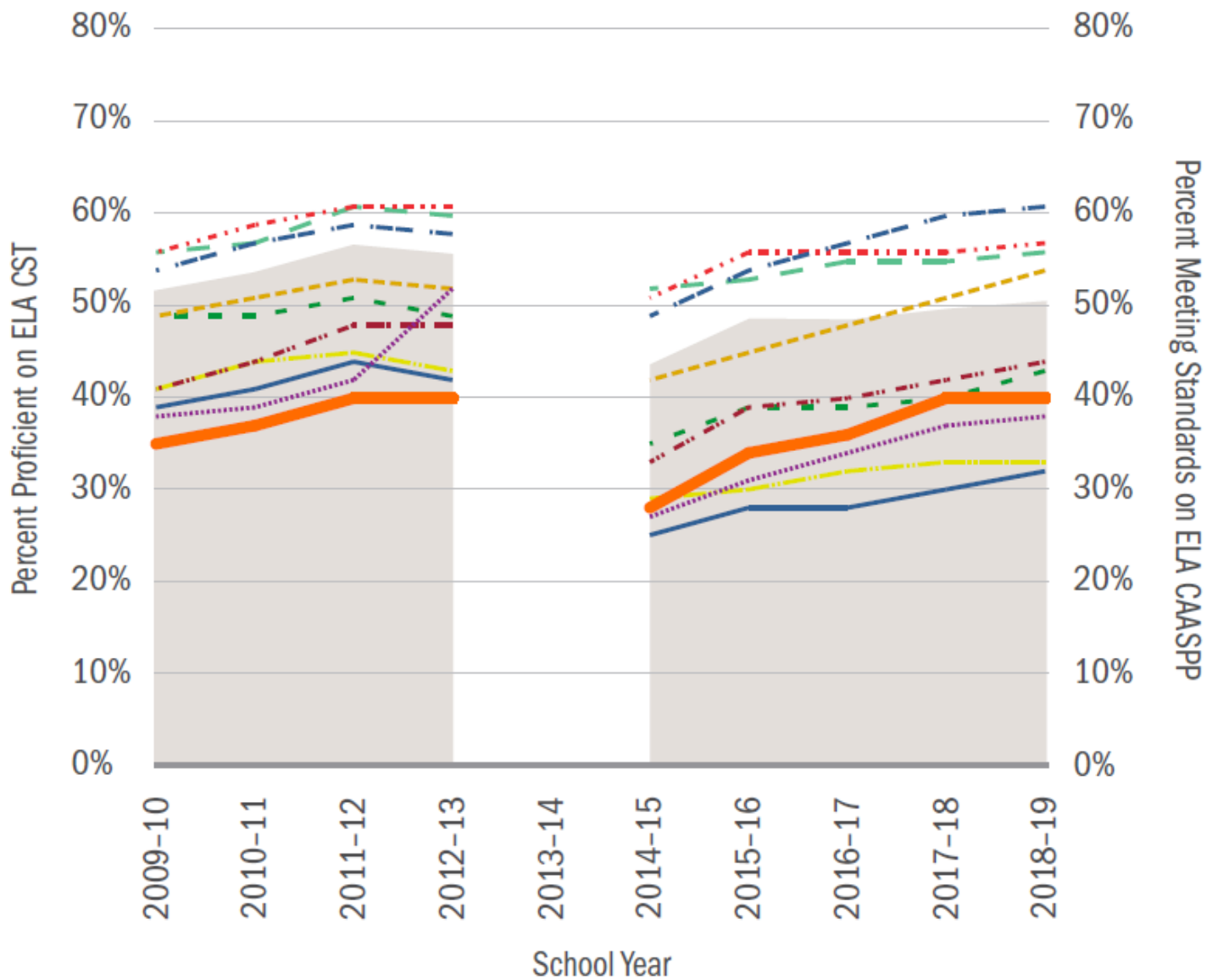
San Bernardino USD Dashboard Results on College/Career Indicator, 2018

	San Bernardino City USD	California
Overall	Orange	Yellow
African American	Orange	Orange
American Indian or Alaska Native	No Performance Color	Orange
Asian	Yellow	Blue
Filipino	No Performance Color	Green
Hispanic or Latino	Yellow	Orange
Pacific Islander	No Performance Color	Orange
White	Yellow	Yellow
Two or More Races	No Performance Color	Yellow
English Learners	Red	Orange
Special Education	Orange	Red
Socioeconomically Disadvantaged	Orange	Orange
Foster Youth	Red	Orange
Homeless	Orange	Orange

Source: California School Dashboard [online database], College/Career, 2018, caschooldashboard.org
 NOTE: The performance level (color) is not included when there are fewer than 30 students in any year.

THE CALIFORNIA COLLABORATIVE ON DISTRICT REFORM

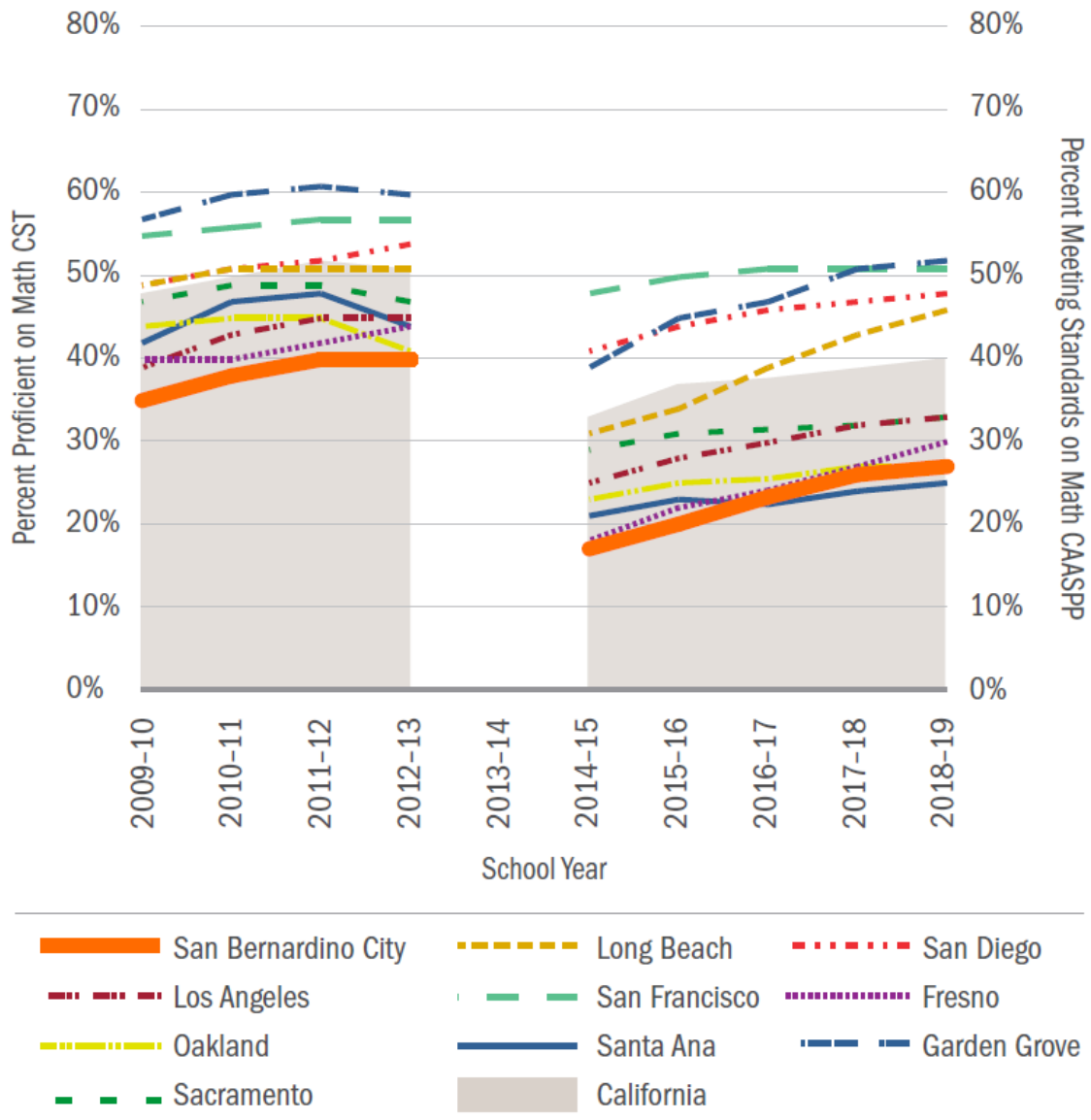
Proficiency Rates on ELA CST 2010–2013 and Meeting Standards Rates on ELA CAASPP 2015–2019



Source: Standardized Testing and Reporting (STAR) Results [online database], CST English-Language Arts, 2010–13, star.cde.ca.gov; California Assessment of Student Performance and Progress [online database], English Language Arts/Literacy, 2015–19, caaspp-elpac.cde.ca.gov/caaspp.

NOTE: Comparison districts were identified based on similarities in the composition of the student population.

THE CALIFORNIA COLLABORATIVE ON DISTRICT REFORM
Proficiency Rates on Mathematics CST 2010–2013 and Meeting Standards Rates on Mathematics CAASPP 2015–2019



Source: Standardized Testing and Reporting (STAR) Results [online database], CST Mathematics, 2010–13, star.cde.ca.gov; California Assessment of Student Performance and Progress [online database], Mathematics, 2015–19, caaspp-elpac.cde.ca.gov/caaspp.
 NOTE: Comparison districts were identified based on similarities in the composition of the student population.