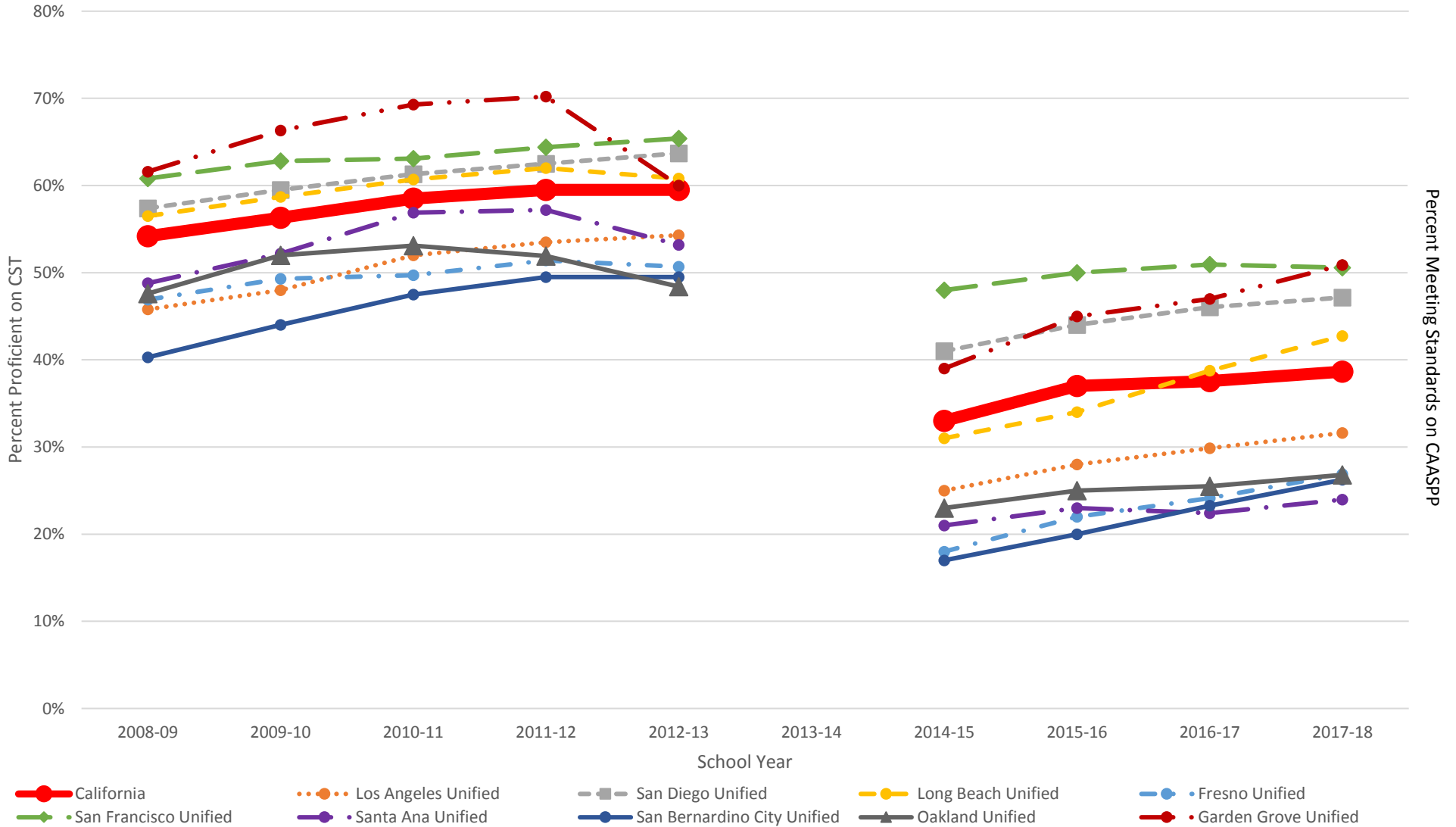


THE CALIFORNIA COLLABORATIVE ON DISTRICT REFORM

Proficiency Rates on Math CST 2008–2013 and Meeting Standards Rates on Math CAASPP, 2015–2018



Source: California Department of Education, Standardized Testing and Reporting (STAR) Results [online database], test results, 2009–13, star.cde.ca.gov; California Department of Education, California Assessment of Student Performance and Progress [online database], test results, 2015–18, caaspp.cde.ca.gov.

Note: Selected districts are the largest in the state (using 2016–17 enrollment data), *and* have at least 20% English learners (using 2016–17 enrollment data) and have at least 40% FRPL students (using 2015–16 enrollment data).