



The California Collaborative on District Reform



The Fresno-Long Beach Learning Partnership

Stephanie Hannan
American Institutes for Research



California Educational Research Association

November 29, 2012

Outline

- ▶ What is the Partnership?
- ▶ District Demographics, 2011-2012
- ▶ Documentation of the Partnership
- ▶ How the Partnership formed
- ▶ Activities & Joint Work
- ▶ Benefits for Participating Districts
- ▶ Lessons for the Field

What is the Partnership?

- ▶ A collaboration between Long Beach and Fresno Unified School Districts
- ▶ Aims to increase achievement and close achievement gaps through systemic capacity-building across districts
- ▶ Pursues common goals, measures student outcomes, shares learning, and supports progress

District Demographics, 2011-12

	Fresno Unified	Long Beach Unified
Total Enrollment	74,235	83,691
Percent Free or Reduced-Price Lunch*	82%	70%
Percent Latino	63%	54%
Percent African American	10%	16%
Percent White	13%	15%
Percent Asian	12%	8%
Percent Filipino	0%	3%
Percent Pacific Islander	0%	2%
Percent American Indian/Alaskan Native	1%	0%
Percent English Learners	23%	22%

Source: <http://dq.cde.ca.gov/dataquest/>

* Most recent data available from 2010-11

Documentation of the Partnership

- ▶ Interviews with key district staff
- ▶ Walk-throughs
- ▶ Focus groups with principals & coaches
- ▶ Attendance at Partnership meetings

How the Partnership Formed

- ▶ **Formalized in 2008**
 - ▶ Developed from superintendents' networks
 - ▶ Initial flexibility motivation
 - ▶ Shared goals for improvement
- ▶ **Identified four focus areas**
 - ▶ Mathematics, ELs, leadership, & college and career readiness
 - ▶ Developed a Memorandum of Understanding
- ▶ **Tapped district staff to participate**
 - ▶ “Job alike roles” across districts

Activities & Joint Work

- ▶ Quarterly meetings
- ▶ Site & classroom visits
- ▶ Joint development of benchmark assessment
- ▶ Collaboration on grant proposals
- ▶ Sharing of resources offered by third-party providers
- ▶ Job-shadowing

Benefit for Participating Districts: Accelerates Reform Efforts

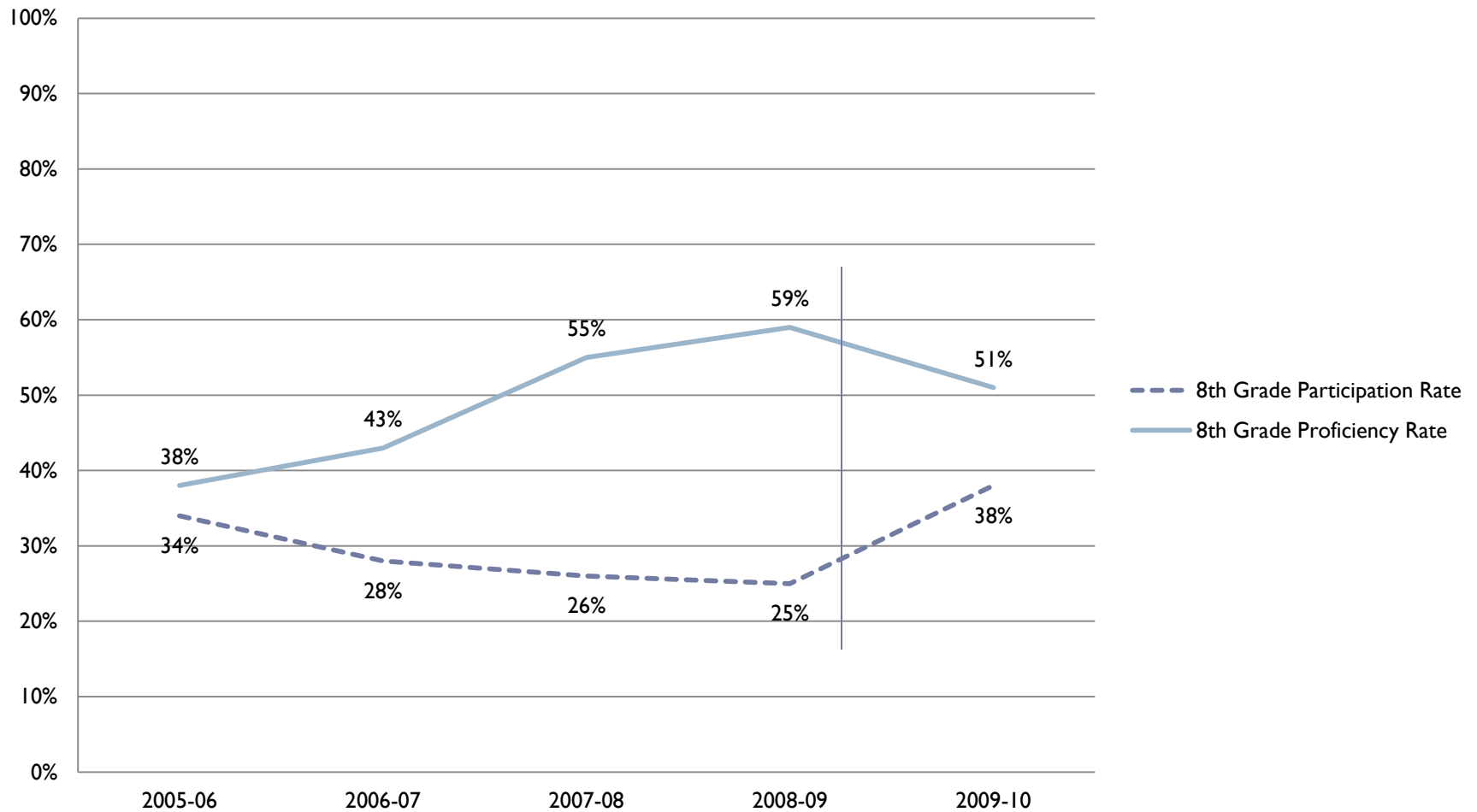
- ▶ **Fresno adopted Long Beach's mathematics program**
 - ▶ Classroom visits and candid discussions on implementation
 - ▶ Professional development for Fresno coaches and principals
 - ▶ Leverage of Long Beach data
- ▶ **Long Beach implemented Fresno's A-G course monitoring tool**
 - ▶ Automatically enrolls students into summer school
 - ▶ Inclusion of Fresno's opt-out policy

Benefit for Participating Districts: Provides Context to Examine Practices

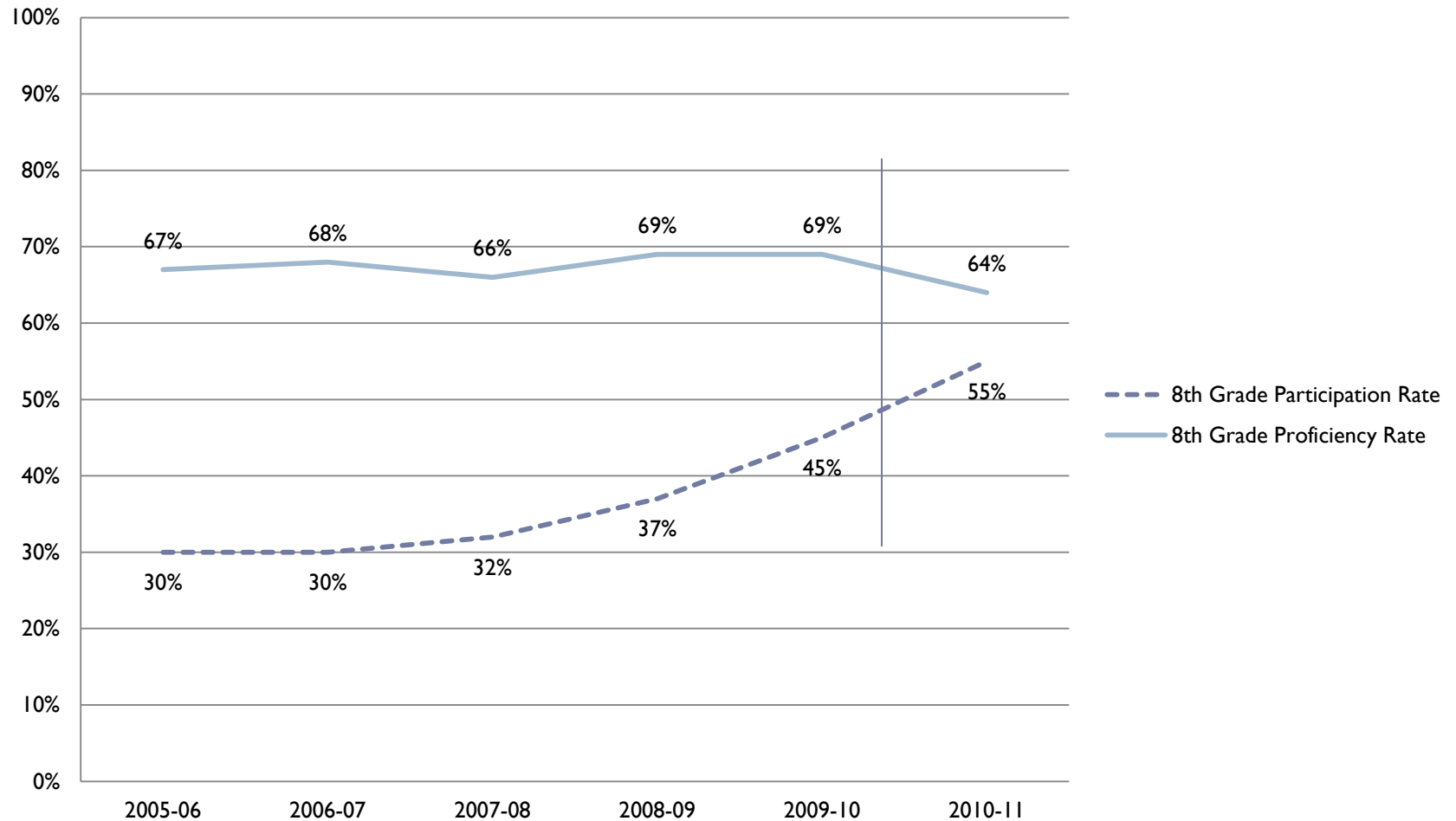
Fresno's 8th grade Algebra I placement policy

- ▶ Lowered the score needed to enter Algebra I
- ▶ Intended to provide targeted supports

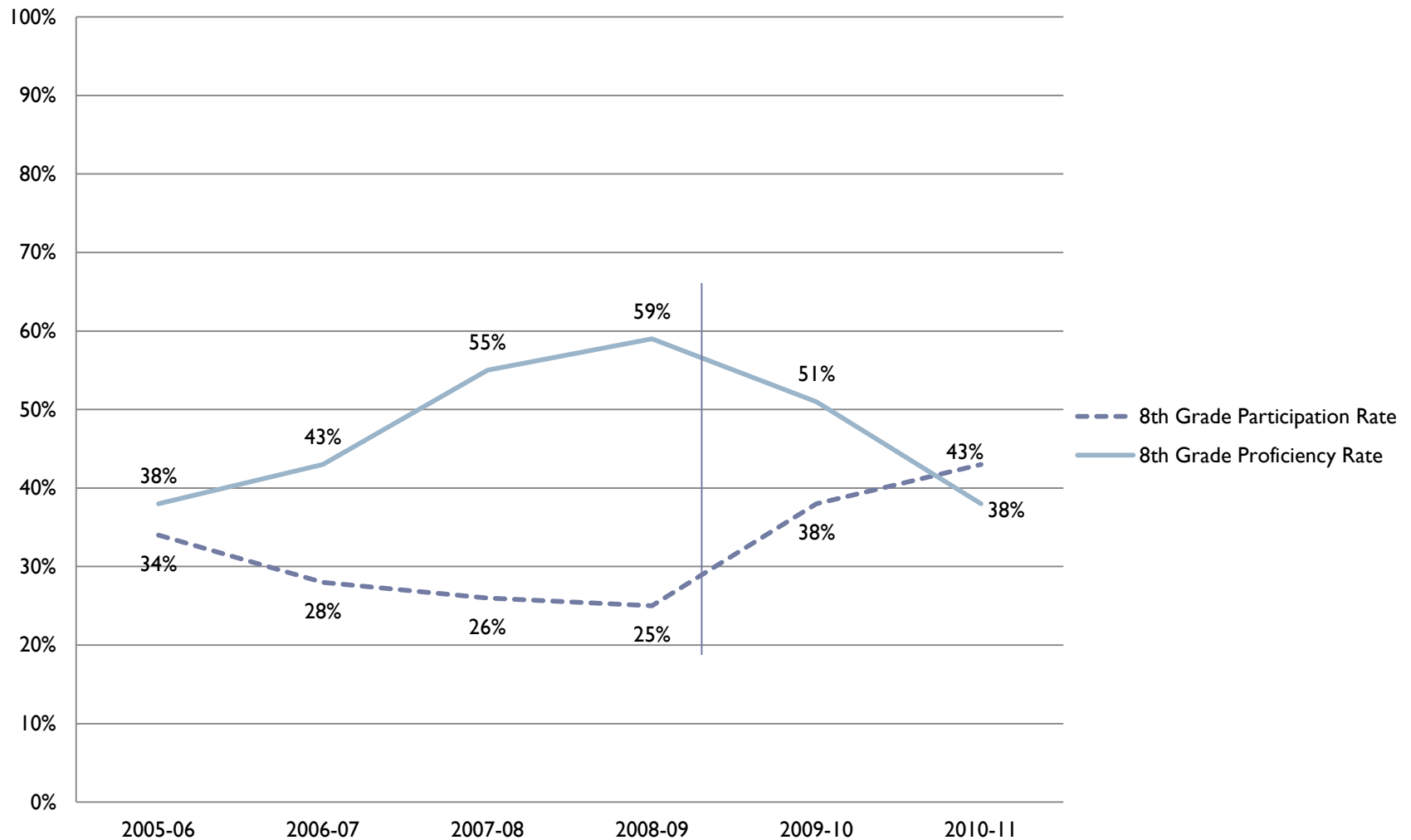
Fresno Unified Student Algebra Trend 2005-06 through 2009-10



Long Beach Unified Student Algebra Trend 2005-06 through 2010-11



Fresno Unified Student Algebra Trend 2005-06 through 2010-11



Benefit for Participating Districts: Provides Context to Examine Practices Cont.

- ▶ Long Beach implemented Fresno's self-contained 6th grade class model
 - ▶ Comparison of CST patterns
 - ▶ School leadership buy-in

Benefit for Participating Districts: Offers Support Network

“...the reality is, if you’re focused on student achievement, there are really no barriers to the Partnership....when I went in, I thought there would be more barriers than there really are. And now that I’m in it, I can’t see anything that would get in my way from continuing, because it’s so important. I would lift heaven and earth as the superintendent to maintain the ability to work with colleagues like Chris and his staff.” – Mike Hanson

Lessons from Documentation

- ▶ Importance of shared commitment, trust, and two-way learning
- ▶ Ability to strengthen leadership and learning practices
- ▶ Shared sense of accountability/collective responsibility
- ▶ Acknowledgement of multiple modes of learning

Documentation Briefs

Briefs available at www.cacollaborative.org



Building District Capacity for Data-Informed Leadership (2012)



Building Capacity for Accelerated Reform: The Fresno-Long Beach Learning Partnership as a Leadership Strategy (2010)



Separate Paths, Common Goals: Cross-District Collaboration on Mathematics and English Learner Instruction (2011)



Special series on the Fresno-Long Beach Learning Partnership (2009)



The California Collaborative on District Reform



Contacts:

➤ ***Stephanie Hannan***
California Collaborative on District Reform
Research Assistant, AIR
shannan@air.org

➤ ***Helen Duffy***
California Collaborative on District Reform
Senior Research Analyst, AIR
hduffy@air.org



Website: www.cacollaborative.org